



LONGING

Derived from nature.
Belong to nature.

ETB1010-OW038-0

MineCore EasyTile Datasheet

discover www.longingu.com

LONGING MineCore

MineCore is an eco-friendly inorganic building material that can withstand continuous high operation temperatures. It is a lightweight, non-plastic and high strength product.

MineCore EasyTile is a hassle-free solution for achieving the timeless charm of mosaic tiles with grouting effects, simplifying installation and enhancing any space. Elevate your design projects effortlessly with MineCore EasyTile.

Typical Applications

Bathroom, western kitchen, coffee shop, shopping mall, supermarket and any indoor scene.

Features + Benefits



Eco-friendly



Fireproof



Waterproof



No Plastic



Low VOCs



Perfect Tile
Grout effect



Moisture-resistant



Formaldehyde Free



Stain Resistant



Dimensional
stability



Easy to clean



Easy to install

Complete Innovation

LONGING 2019 brings an innovative new concept to the market: aspires to be the market leader in innovative mineral building materials.

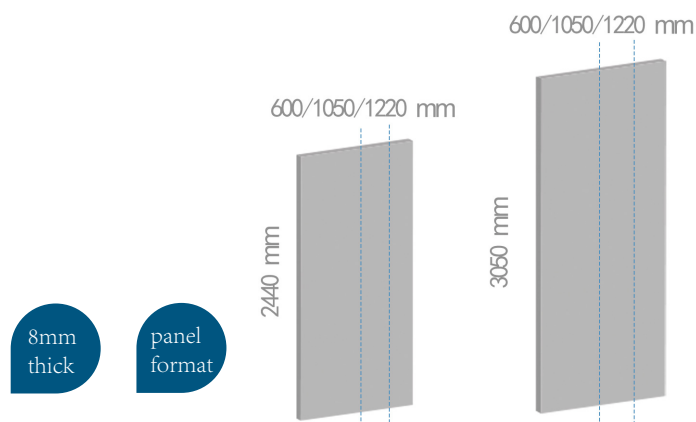
Over the years, the LONGING **MineCore EasyTile** range has continued to offer the freedom to innovate. **MineCore EasyTile** provides creative freedom to designers, specifiers and end users, providing safe, decorative and hygienic wall solutions as well as sanitary wall solutions that meet aesthetic and performance requirements.

Our **MineCore EasyTile** range offers design flexibility for any environment and any interior.

Better Together

Due to the natural materials used, MineCore can be directly landfilled without affecting soil, water quality, and air to cause continuous secondary pollution.

LONGING MineCore is truly derived from nature and belongs to nature.





ETW3060-WT380

For more info please scan the QR code.

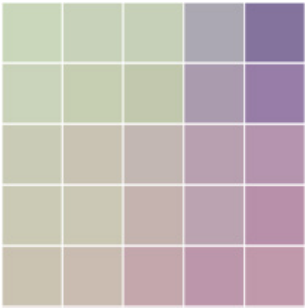


www.longingu.com

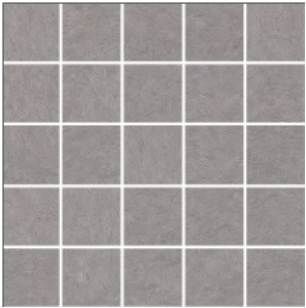
Digital Printing



ETW1010-WSW485



ETW1010-Multicolor gradient



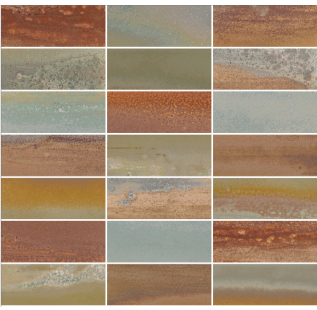
ETW1010-LYD205



ETW1010-WSW180



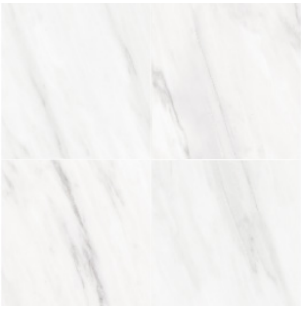
ETG1010-VCG41N809840002-1



ETW07520-WJ21

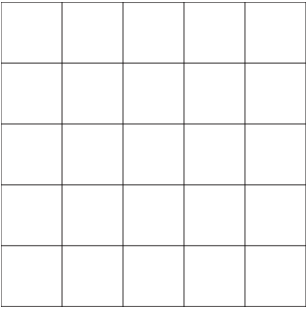


ETW3060-WT380

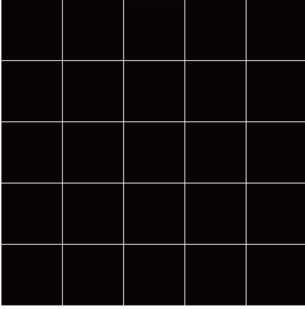


ETW3060-WSW378

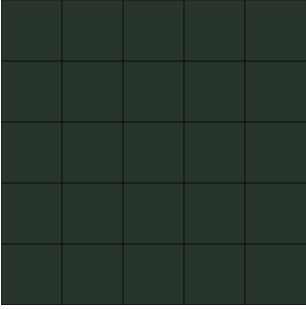
Solid Color



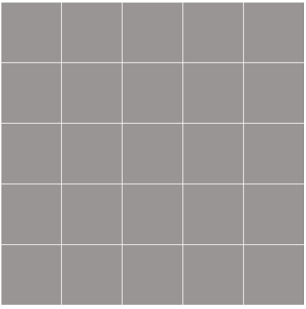
ETB1010-OW038-0



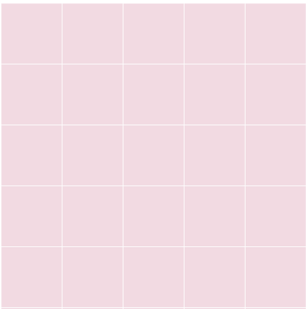
ETW1010-Black



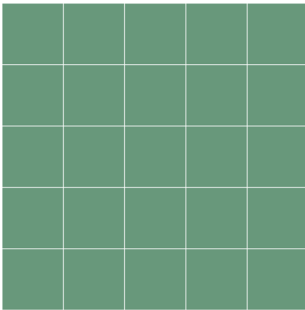
ETB1010-RAL6009



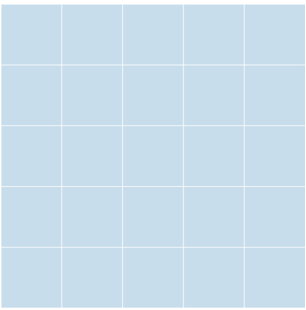
ETW1010-NN1370-3



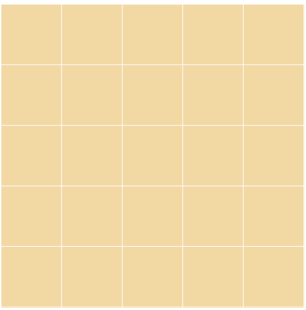
ETW1010-RC009-4



ETW1010-GN6080-2

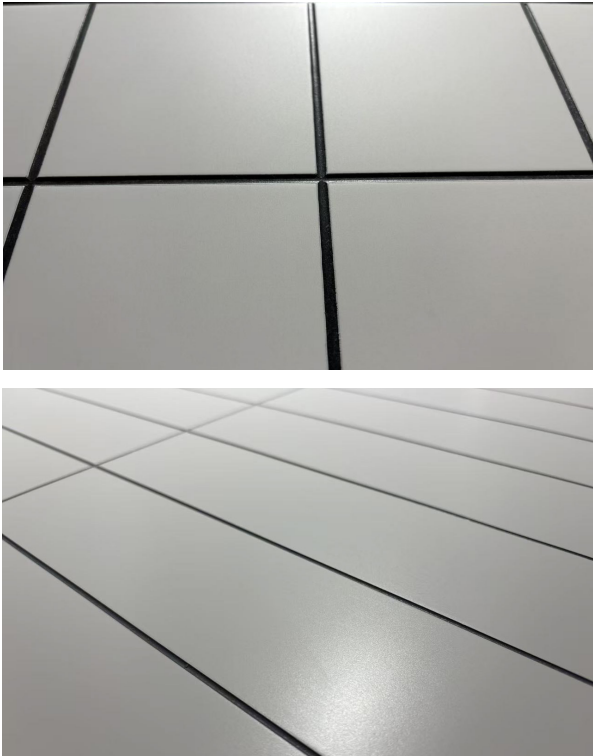


ETW1010-BN0003-4



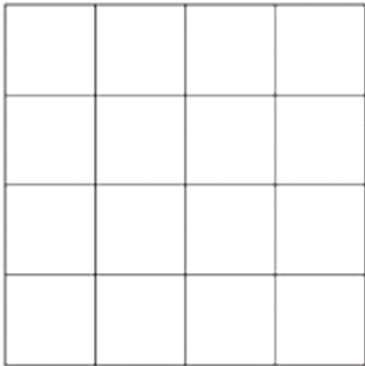
ETW1010-ON2701-4

Matt Effect

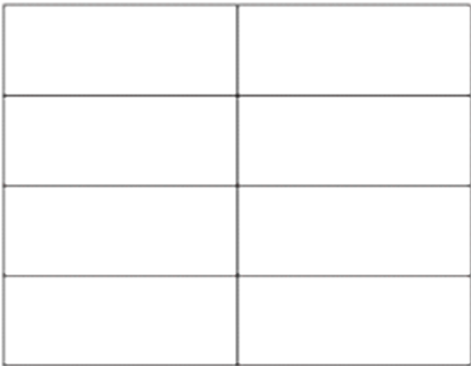


The colors depicted may slightly differ from the actual products due to variations in the printing process, please refer to the actual color. Inquire us for more designs.

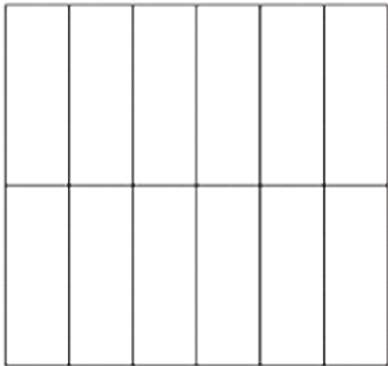
Grid



100*100mm
200*200mm
300*300mm



100*200mm
150*300mm
300*600mm



80*260mm
100*300mm
300*600mm

Seam Color



White



Gray



Black

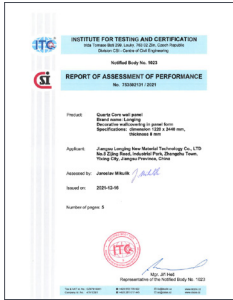


ETW3060-WSW378

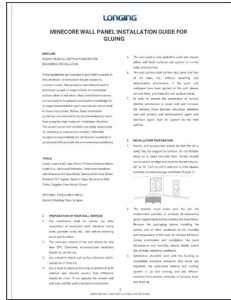
Thickness	8mm 0.31"	
Dimensions	600x2440/3050mm 24x96/120" 1050x2440/3050mm 41x96/120" 1220x2440/3050mm 48x96/120"	
Fire and smoke performance	EN 13501-1:2018	Class A2 - s1, d0
Bending strength	EN 12467:2012+A2:2018	Average ≥ 10.0 MPa
Resistance to staining	EN ISO 26987:2012	Index 0, Not affected
Moisture movement	EN 12467:2012+A2:2018	Length direction: 0.06% Width direction: 0.06%
Adhesion(Cut-cross test)	ISO 2409:2020	Class 0
Pencil hardness	ISO 15184:2020	\geq HB
Colour fastness to artificial light	ISO 105-B02:2014	Grade 6
Micro-scratch resistance	EN 16094:2012, Procedure A	MSR-A2
Asbestos content	NIOSH 9002:1994	Negative
Fungi resistance	ISO 846:2019	No growth



Discover more online!



CE Certificate



Installation Guide



Profile_MineCore
Wall Panel_Longing

Even more great resources:

- <https://www.youtube.com/@longingglobal>
- <https://www.facebook.com/longingglobal>
- <https://www.linkedin.com/company/longingu>

Follow us



ADD: 8 Zijiang Road, Yixing City, Wuxi City, Jiangsu Province, China 214231

Tel: +86-510-87328116 / +86-13918909228

Email: info@longingu.com

Website: www.longingu.com